

WEIGHING SCALES PALLET TRUCKS INDUSTRIAL SOLUTIONS

GIROPES

WEIGHING SOLUTIONS

is a trade mark of GIROPES



Baxtran



WEIGHING SCALES PALLET TRUCKS COLLECTION

Giropès and Baxtran's Pallet Truck collection.
Multifunction tools with different options
according to the customer needs.

GIROPES  **Baxtran**

TP410i

LCD

**Stainless steel
weighing pallet trucks,
perfect to wet
environments**

Thinked to wet environments,
with tare, price counting,
checkweighter and weight
accumulation.



GIROPES
WEIGHING SOLUTIONS



**WIDE
VERSION**
for american pallets
AVAILABLE NOW

ARX
LED

ARX
LCD

TP410
LCD

**Multifunction
weighing scales
pallet trucks,**
Quality design and finish,
with a friendly use

Thoughtful mobile weighing
with a capacity to 2000 kg.
Versions with rechargeable
internal battery to daily use.
Handling pallets of any size
thanks to a catalog with a wide
variety of options.

This collection allows us to
give a solution for the different
needs of our customers with
the following options: WIFI,
printer, tickets design and
configuration, manual tare and
pretare.

LED | LCD SCREEN

Quality design and finish.
Dust paint for maximum duration.
Easy operation with multifunction
indicator and LED or LCD display
according to the version, with or
without printer.



Maximum height 120 mm



ARX LED Pallet Truck with printer incorporate



ARX LCD | LED



AC/DC



BAT INT



NO VERIF



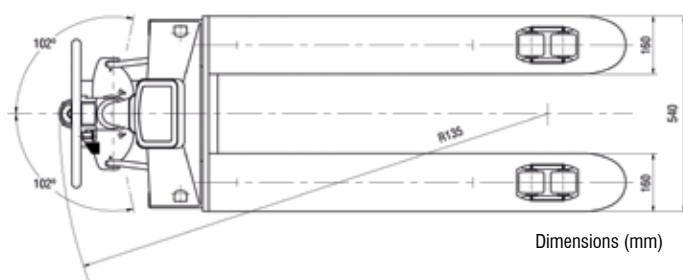
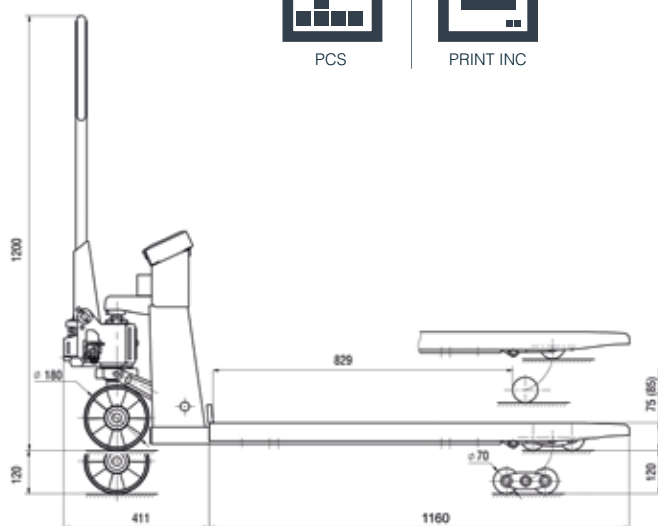
IP 54



PCS



PRINT INC



Dimensions (mm)

FEATURES:

- » Structure in powdered painted steel
- » Wheels of cast steel and polyurethane external coating
- » **2 versions:**
 - » Without printer
 - » With printer

LED | LCD INDICATOR:

- » ABS housing
- » IP54 protection
- » Units: kg and lb
- » Bubble level
- » Rechargeable battery 6V 4,5Ah
- » Power supply AC/DC 100 - 240 Vac 50/60 Hz
- » Operating temperature: -10°C a 40°C

FUNCTIONS:

- » Weight accumulation
- » Zero
- » Tare
- » Gross/Net
- » Piece counting function
- » Checkweigher function
- » Hold function
- » Percentage weighing

PRINTING:

- » Printer version prints tare, gross and net
- » Date and time

ARX LED

Code #	Capacity (kg)	Readout (kg)	Printer	PACKING	
				Dimensions (mm)	Weight (kg)
260962	2000	0,5		1600x600x1400	118
260963	2000	0,5		1600x600x1400	118

Certifications

ENAC

Code #

900004

900004

ARX LCD

Code #	Capacity (kg)	Readout (kg)	Printer	PACKING	
				Dimensions (mm)	Weight (kg)
261026	2000	0,5		1600x600x1400	118
261030	2000	0,5		1600x600x1400	118

Certifications

ENAC

Code #

900004

900004

TP410 LCD *GIROPES*

Multifunction weighing pallet trucks, with checkweighing function and selection of target weight

TP410 serie with Giropès design and technology, is the result of the development of our own products and the conviction of the investment in continuous improvement.

FUNCTIONS:

- » Weight accumulation: automatic / manual.
- » Totalization on screen.
- » Gross / Net.
- » Manual tare and pretare
- » Zero
- » Piece counting function
- » Checkweighing and selection of target weight
- » Function division 1/10 verification. Display for a few seconds

PRINTING:

- » Programmer of three headings.
- » Printer languages (Spanish, French, Portuguese, Italian, English).



230 V



BAT INT



VERIF



IP 54



IP 65



PCS



PRINTER INT



CHECK



RS232



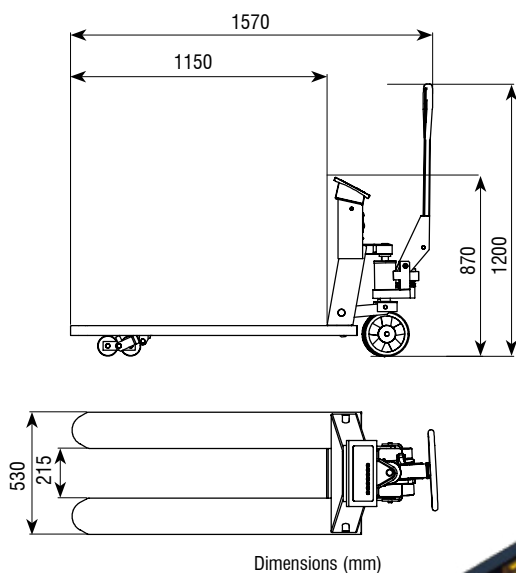
RS232

FEATURES:

- » Available in CE-M approved versions.
- » Built in painted steel.
- » With load cells IP68.
- » Wheels with a polyurethane outer Shell.
- » **2 versions:**
 - » Without printer
 - » With printer

LCD INDICATOR:

- » Weight tare digital indicator.
- » Stainless steel housing.
- » IP54 or IP65 protection.
- » Backlight LCD display. With digits of 40 mm.
- » Li-ion rechargeable battery, 7,4V · 2,6Ah.
- » Power supply 230Vac.
- » Two output RS232 are included.
- » Unique range, multi-range or multi-interval.
- » Units: kg.
- » Approval 6.000 divisions OIML class III and IV.
- » EC approval.



SERIE TP410 LCD

Code #	Capacity (kg)	Readout (kg)	Printer
290001	1000/2000	0,2/0,5	
290002	1000/2000	0,5/1	
290003	1000/2000	0,2/0,5	
290004	1000/2000	0,5/1	

Certifications

ENAC

Code #

900004

900004

900004

900004

accessories

Código # Accessories

220021 Wifi communication board for TP410

220008 Additional memory ALIBI/DSD

TP410 LCD

GIROPES

WEIGHING SOLUTIONS

Multifunction Weighing pallet trucks, with checkweighing function and selection of target weight

TP410 serie with Giropès design and technology, is the result of the development of our own products and the conviction of the investment in continuous improvement.

FUNCTIONS:

- » Weight accumulation.
- » Totalization on screen
- » Gross / Net
- » Manual tare and pretare
- » Zero
- » Piece counting function
- » Checkweigher with LCD signal
- » Checkweighing and selection of target weight.
- » Function division 1/10 verification. Display for a few seconds.

PRINTING:

- » Programmer of three headings
- » Printer languages (Spanish, French, Portuguese, Italian and English)





230 V



BAT INT



VERIF



IP 54



IP 65



PCS



PRINT INT



CHECK



RS232



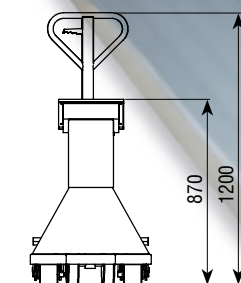
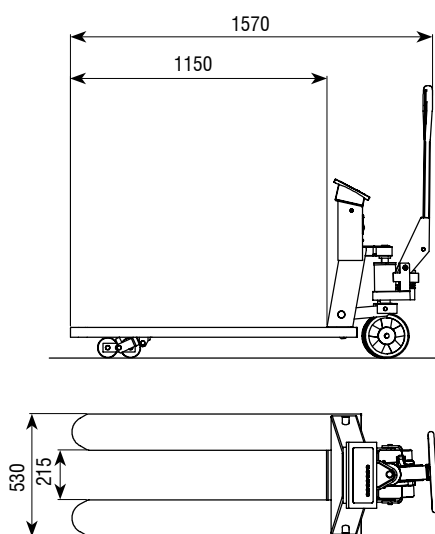
RS232

FEATURES:

- » Pallet truck weigher. In EC-M approved version also available.
- » Built in stainless steel
- » With load cells IP68
- » Nylon wheels with a polyurethane outer Shell.
- » **2 versions:**
 - » Without printer
 - » With printer

LCD INDICATOR:

- » Weight tare digital indicator
- » Stainless steel housing
- » IP54 or IP65 protection
- » Backlight LCD display. With digits of 40 mm.
- » Power supply 230 Vac.
- » 2 RS232 output are included.
- » Unique range, multi-range or multi-interval.
- » Units: kg.
- » Approval 6.000 divisions OIML class III and IV.
- » EC approval.



Dimensions (mm)



SERIE TP410i lcd

Code #	Capacity (kg)	Readout (kg)	Printer
290005	1000/2000	0,2/0,5	
290006	1000/2000	0,5/1	
290007	1000/2000	0,2/0,5	
290008	1000/2000	0,5/1	

Certifications

ENAC

Code #

900004

900004

900004

900004

accessories

Code #	Accessories
220021	Wifi communication board for TP410
220008	Additional memory ALIBI/DSD

GIROPES[®] WEIGHING SOLUTIONS SERIE PALLET TRUCKS WIDE

New pallet trucks WIDE

to be used in the
weighing of American
pallets

ARX^{WIDE} / TP410-410i^{WIDE}

The steady growth of our brands to new markets has resulted in expansion of our range of hand pallet trucks by adding the WIDE versions of two models which are widely-known and well-established in different markets around the world.



ARX^{WIDE}

IN PAINTED STEEL

LCD / LED

FEATURES:

- » Structure in powdered painted steel
- » Wheels of cast steel and polyurethane external coating
- » **2 versions:**
 - » Without printer
 - » With printer

LED | LCD INDICATOR:

- » ABS housing
- » IP54 protection
- » Units: kg an lb
- » Bubble level
- » Rechargeable battery 6V 4,5Ah
- » Power supply AC/DC 100 - 240 Vac 50/60 Hz
- » Operating temperature: -10°C a 40°C

FUNCTIONS:

- » Weight accumulation
- » Zero
- » Tare
- » Gross/Net
- » Piece counting function
- » Checkweighter function
- » Hold function
- » Percentage weighing

PRINTING:

- » Printer version prints tare, gross and net
- » Date and time



AC/DC



BAT INT



NO VERIF



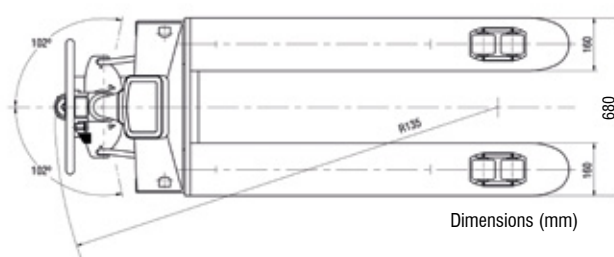
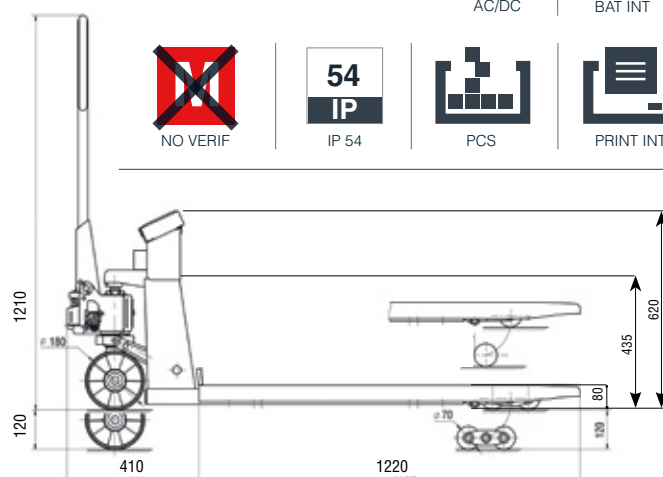
IP 54



PCS



PRINT INT



Dimensions (mm)

ARX LED

Code #	Capacity (kg)	Readout (kg)	Printer	PACKING	
				Dimensions (mm)	Weight (kg)
261210	2000	0,5		1700x800x1400	130
261211	2000	0,5		1700x600x1400	130

Certifications

ENAC

Code #

900004

900004

ARX LCD

Code #	Capacity (kg)	Readout (kg)	Printer	PACKING	
				Dimensions (mm)	Weight (kg)
261212	2000	0,5		1700x800x1400	130
261213	2000	0,5		1700x800x1400	130

Certifications

ENAC

Code #

900004

900004

GIROPES
WEIGHING SOLUTIONS

TP410 WIDE

IN PAINTED STEEL / IN STAINLESS STEEL

LCD





230 V



BAT INT



VERIF



IP 54



IP 65



PCS



PRINT INT



CHECK



RS232



RS232

FEATURES:

- » Pallet truck weigher. In EC-M approved version also available.
- » Built in stainless steel or painted steel
- » With load cells IP68
- » Nylon wheels with a polyurethane outer Shell.
- » **2 versions:**
 - » Without printer
 - » With printer

FUNCTIONS:

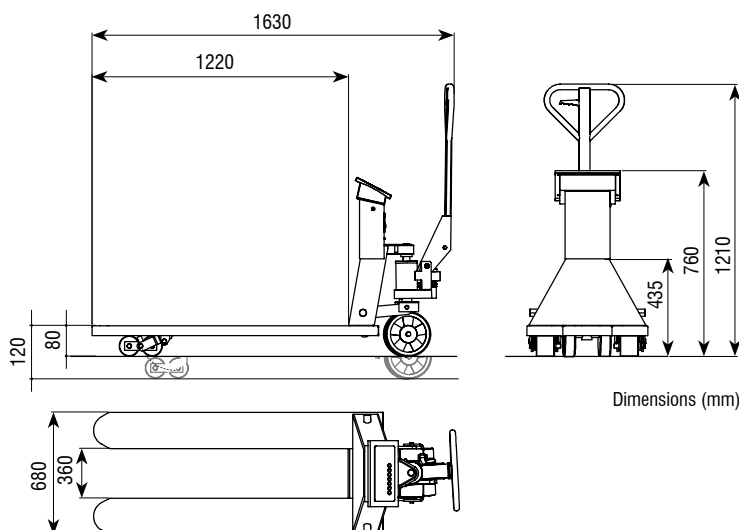
- » Weight accumulation.
- » Totalization on screen
- » Gross / Net
- » Manual tare and pretare
- » Zero
- » Piece counting function
- » Checkweigher with LCD signal
- » Checkweighing and selection of target weight.
- » Function division 1/10 verification. Display for a few seconds.

PRINTING:

- » Programmer of three headings
- » Printer languages (Spanish, French, Portuguese, Italian and English)

LCD INDICATOR:

- » Weight tare digital indicator
- » Stainless steel housing
- » IP54 or IP65 protection
- » Backlight LCD display. With digits of 40 mm.
- » Power supply 230 Vac.
- » 2 RS232 output are included.
- » Unique range, multi-range or multi-interval.
- » Units: kg.
- » Approval 6.000 divisions OIML class III and IV.
- » EC approval.



SERIE TP410 LCD

Code #	Capacity (kg)	Readout (kg)	Finished	Printer
290009	1000/2000	0,2/0,5	painted	
290010	1000/2000	0,5/1	painted	
290011	1000/2000	0,2/0,5	painted	
290012	1000/2000	0,5/1	pintada	

Certifications

ENAC

Code #

900004

900004

900004

900004

Certifications

ENAC

Code #

900004

900004

900004

900004

Code #	Capacity (kg)	Readout (kg)	Finished	Printer
290013	1000/2000	0,2/0,5	stainless steel	
290014	1000/2000	0,5/1	stainless steel	
290015	1000/2000	0,2/0,5	stainless steel	
290016	1000/2000	0,5/1	stainless steel	

Code # Accessories description

220021 Wifi communication board for TP410

220008 Additional memory ALIBI/DSD

SOLUTIONS DIFFERENT SECTORS



Solutions multiple needs

Weighing device, among which weight indicators and scales with different capacities and dimensions in response to its necessities and free spaces.

Models with different finitions according to environment and product to weigh. Different dimensions to deliver with the space and area exigence.

3 VERSIONS OF DIFFERENT PLATFORMS:

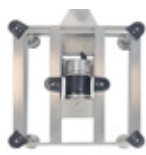
V1. Tubular framework in steel, sheet in stainless steel and load cell in aluminium IP65.

V2. Tubular framework in stainless steel, sheet in stainless steel and load cell in aluminium IP65. The load cell is covered by a rubber protection which provides a IP68 sealing.

V3. Tubular framework in stainless steel, sheet in stainless steel and load cell in stainless steel, IP68.



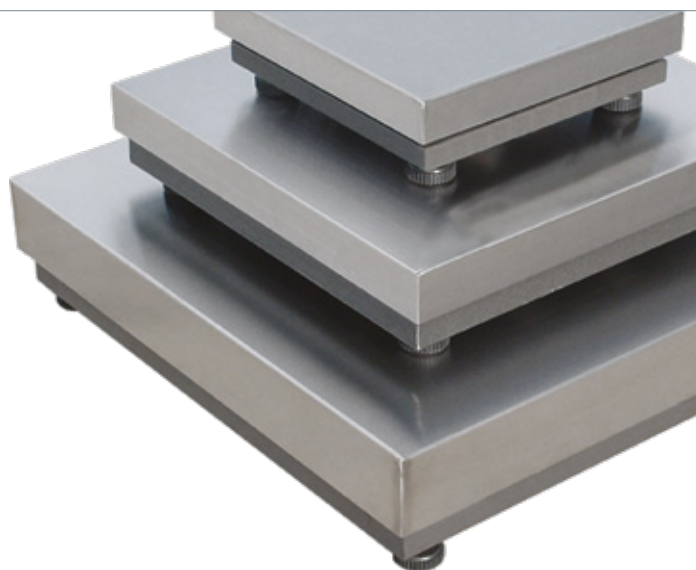
STEEL IP65



STAINLESS STEEL
ALUMINIUM



STAINLESS STEEL
IP68



COMBINE WITH
OUR INDICATORS

Industry and logistics

BENCH SCALES:

Bench scale, used to control the weight of fruit boxes, sacks, paint mixtures, packaging and animals.

Bench platforms with different versions: entirely in stainless steel or mixed, with structure in painted steel and stainless steel pan for less demanding environments.

Different protections IP of load cells and indicators.

4 LOAD CELLS SCALES:

4 load cells scale platforms with different finitions available:

- » With black diamond pan.
- » With stainless steel structure and pan.

Different protections IP for load cells and indicators.

With ramps to facilitate access to the platform.

Baxtran has in its Catalog multiples assemblies to differents platforms with ABS or stainless steel indicators:

- » Weight tare indicators in ABS or stainless steel.
- » LCD or LED display
- » Models valids to legal metrology or to internal use.
- » Different functions according to model.

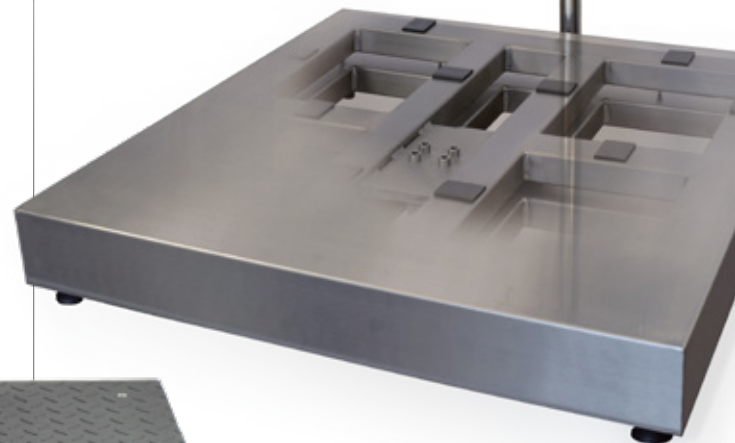
Set with double tubular frames and stainless steel cell.

Totally in stainless steel to be used in wet rooms or laboratories to weigh products such as fish, cereals, meat, paints, etc.

Lightweight sheet with easy extraction and open structure, designed to allow easy transfer and cleaning.



DESIGN OF DOUBLE TUBULAR FRAME



GI400 LCD

GI410 LCD



GI400 LED

GI410 LED



GI410 LCD

GI410 LED

Load cells that ensure reliability of weighing

Our cells and our mounting kits allows the weighing solution in all your projects and facilities.

GIROPES
WEIGHING SOLUTIONS

