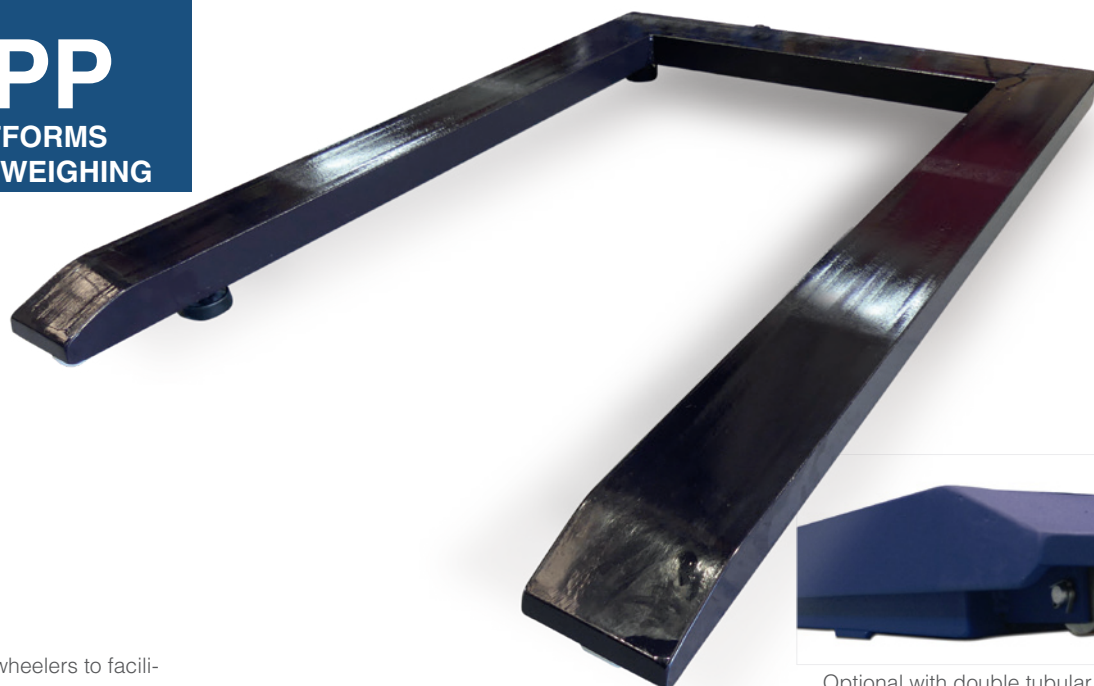


GIROPES



BPP

PLATFORMS
PALLET WEIGHING



Handle and wheelers to facilitate the sliding.

Standard version with unic chassis with load cells with pivot feet.

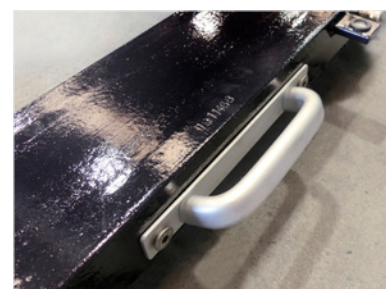
Optional version with double chassis (for painted steel scales and stainless steel scales). The load cells are fixed on the inferior chassis and the superior chassis supports on the load cells.



Optional with double tubular frame



Detail load cell



SPECIFICATIONS

FEATURES

Type	European and American pallet weighing platform
Material	Painted structure and sheet Completely stainless steel AISI 304
Thickness of the sheet	Painted version UPN Stainless steel sheet of 5 mm folded version
Installation	On ground
Dimensions	1250 x 850 mm
Capacities	From 300 to 3000 kg
Height of weighing surface	90 mm, a minimum height of 85 mm (consult for a lower height)
Structure	Double tubular frame (optional)
Cable length	5 m

LOAD CELLS

- > **G5N: For painted platforms:** Shear beam load cell | Totally in stainless steel. | 3000 divisions OIML R60 class C3. | Hermetically sealed, laser welding. | Protection IP68.
- > **G5i For stainless steel platforms:** Shear beam load cell. | Totally in stainless steel. | 3000 divisions OIML R60 class C3. | Hermetically sealed, fully in welded | Protection IP69K.
- > **G35n (0, 30t – 6 t) (Optional)** Shear beam load cell | Nickel-plated steel. | 3000 divisions OIML R60 class C3. | Hermetically sealed, fully in welded. | Protection IP66. | Available in ATEX (optional)
- > **G35a (0, 30t – 6 t) (Optional)** Shear beam load cell | Totally in stainless steel. | 3000 divisions OIML R60 class C3. | Hermetically sealed, fully in welded. | Protection IP66 | Available in ATEX (optional)
- > **G35i (0, 30 t – 6 t) (Optional)** Shear beam load cell. | Totally in stainless steel. | 3000 divisions OIML R60 class C3. | Hermetically sealed, fully in welded | Protection IP69K. | Available in ATEX (optional)

OPTIONALS

ACCESSORIES

- > **Column and indicator support.** For 4 load cell platforms and hybrid scales. with base to fix on ground. 2 versions: painted steel and stainless steel. Height: 800 mm.
- > **Stainless steel finish options.** See page 78

INDICATORS

- > See page 98

SOFTWARE & APP

- > GISCALE ONE-GISCALE PRO: For the management and control of production lines
- > GIAPP: Android application for viewing and controlling the Gi400 / Gi410 series indicators

APPROVAL & CALIBRATION

Description	# Code
CE APPROVALS: from 3 kg to 15000 kg	-
ENAC CALIBRATIONS: from 3 kg to 6000 kg	-

ACCESSORIES

Description	# Code
Supplement for load cells G35i in stainless steel for stainless steel platforms to 3000 kg	240131
Supplement for nickel steel load cell G35n for painted platforms and platforms with structure painted and stainless steel sheet to 3000 kg	240130
Supplement for stainless steel ATEX load cells and ATEX junction box, for stainless steel platforms to 3000 kg	240088
Supplement for stainless steel ATEX load cells and ATEX junction box, for painted or with steel sheet platforms up to 3000 kg	240089
Sealant and isolating gel to protect electronic circuits	240185
Additional metre of cable	580025

BPP

Dimensions (mm)	Capacity (kg)	Readout (g)	COMPLETELY PAINTED	COMPLETELY STAINLESS STEEL AISI 304
			# Code	# Code
1250 x 850	300	100	170703	170712
1250 x 850	600	200	170708	170713
1250 x 850	1500	500	170709	170714
1250 x 850	3000	1000	170711	170715

BPP - double chassis

Dimensions (mm)	Capacity (kg)	Readout (g)	COMPLETELY PAINTED	COMPLETELY STAINLESS STEEL AISI 304
			# Code	# Code
1250 x 850	300	100	171323	171327
1250 x 850	600	200	171324	171328
1250 x 850	1500	500	171325	171329
1250 x 850	3000	1000	171326	171330

BPP - wide

Dimensions (mm)	Capacity (kg)	Readout (g)	COMPLETELY PAINTED	COMPLETELY STAINLESS STEEL AISI 304
			# Code	# Code
1250 x 1000	300	100	171603	171605
1250 x 1000	600	200	171604	171501
1250 x 1000	1500	500	171558	171514
1250 x 1000	3000	1000	170710	170704

Note: The reference do not include the indicator

GIROPES



BPP

PLATFORMS
PALLET WEIGHING

BPP SERIE

BPP SERIE - DOUBLE
CHASSIS

BPP - WIDE SERIE



OPTIONAL INDICATORS